

CHTB

薄型油壓缸

CHTB HYDRAULIC PUSH PULL CYLINDER



產品特性

體積小，節省空間，安裝空間受限制時的選擇。標準化規格，直接安裝，不需其它配件，降低成本。
缸體材質採用機械構造用碳素鋼，內壁特殊加工處理，表面光滑，使用壽命長。軸向，側向油路板型免配管，提升整體美觀。

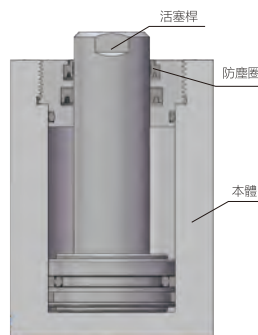
最大操作壓力：140 kgf/cm²
最小操作壓力：5 kgf/cm²
作動方式：複動式

FEATURES

Compact construction for space saving. Ideal for application in a restricted space. Standardized specifications. Direct installation without need of any further accessories for saving cost. The cylinder barrel is made of structural carbon steel. Internal surface is specially treated. Smoothness and long service life. Axial and side manifold type without upgrading pipe, made the cylinder appearance look better.

Max. operating pressure : 140 kgf/cm²
Min. operating pressure : 5 kgf/cm²
Double acting

剖面圖 Sectional view

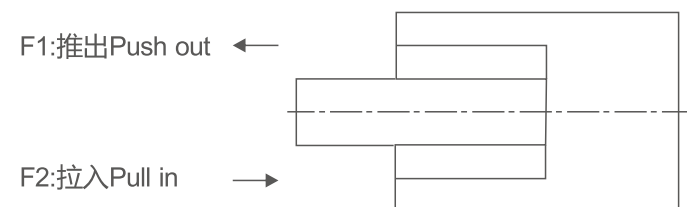


注意事項

可接受訂製，歡迎與本公司洽詢。
CHTB-LAM和CHTB-LWM系列，行程10mm無附鍵槽及平鍵。

NOTE

You are welcome to order the special strokes under request.
CHTB-LAM and CHTB-LWM type, the stroke is 10mm without key.



訂購標示法 ORDERING INDICATION

示例：CHTB-SD32-20N

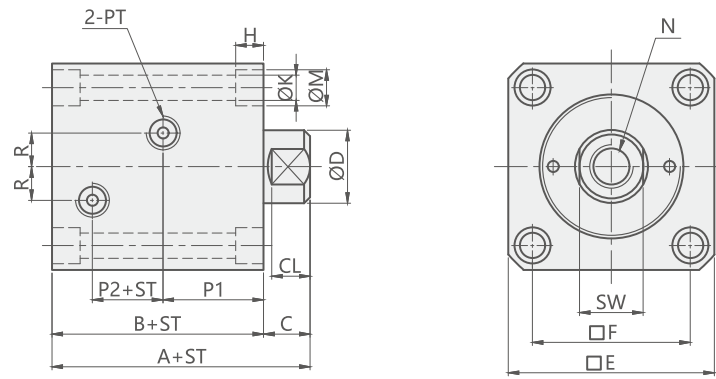
CHTB	系列 Series	CHTB	
SD	安裝型式 Mounting type	SD:	軸向單軸安裝型 Axial single end rod type
		SW:	軸向雙軸安裝型 Axial double end rod type
		SDMA:	軸向前油路板型 Axial front manifold type
		SDMB:	軸向後油路板型 Axial back manifold type
		LA:	側向單軸安裝型 Lateral single end rod type
		LW:	側向雙軸安裝型 Lateral double end rod type
32	油缸內徑 Hydraulic cylinder inside diameter	Φ20, Φ25, Φ32, Φ40, Φ50, Φ63, Φ80	
		20	標準行程 Standard stroke
N	軸端形式 Rod end type	N: 內牙	N: Female thread
		W: 外牙	W: Male thread

規格參數表 SPECIFICATION

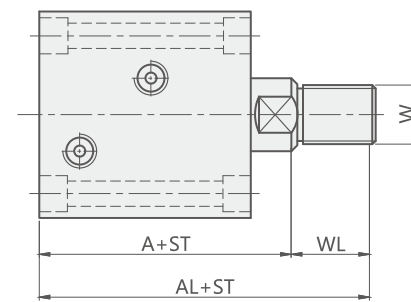
油缸內徑 HYDRAULIC CYLINDER INSIDE DIAMETER(mm)	活塞桿徑 PISTON DIAMETER(mm)	受壓面積 PRESSURE AREA(Cm ²)	操作壓力 OPERATION PRESSURE(kgf/cm ²)										使用溫度範圍 RANGE OF TEMPERATURE(°C)		
			10		35		70		100		140				
			F1	F2	F1	F2	F1	F2	F1	F2	F1	F2	F1	F2	
Φ20	Φ12	3.14	2.01	31	20	110	71	220	141	314	201	440	281	472	-10~+60°C
Φ25	Φ14	4.91	3.37	49	34	172	118	344	236	491	337	687	472	703	-10~+60°C
Φ32	Φ20	8.04	4.9	80	49	281	172	563	343	804	490	1126	686	1072	-10~+60°C
Φ40	Φ25	12.57	7.66	126	77	440	268	880	536	1257	766	1760	1072	1412	-10~+60°C
Φ50	Φ30	19.64	12.57	196	126	687	440	1375	880	1964	1257	2750	1760	2257	-10~+60°C
Φ63	Φ35	31.17	21.55	312	216	1091	754	2182	1509	3117	2155	4364	3017	3917	-10~+60°C
Φ80	Φ45	50.27	34.37	503	344	1759	1203	3519	2406	5027	3437	7038	4812	6237	-10~+60°C

使用流體：相當於ISO粘度等級的ISO-VG-32一般液壓油
Usable fluid: General Hydraulic Oil Equivalent to ISO-VG-32

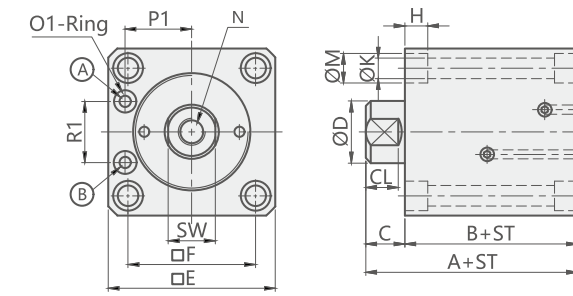
SD-N軸向單軸安裝之軸端內牙型



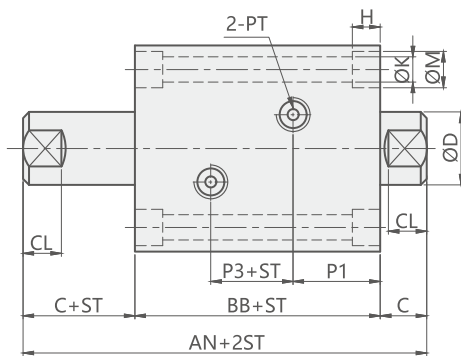
SD-W軸向單軸安裝之軸端外牙型



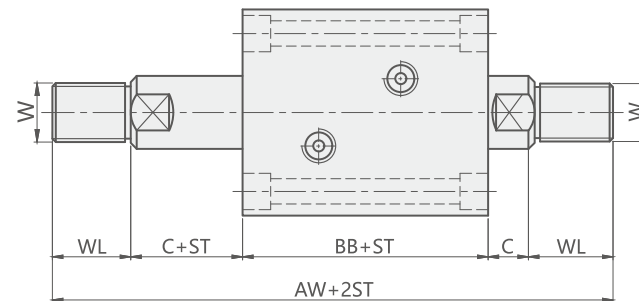
SDMA-N軸向前油路板之軸端內牙型



SW-N軸向雙軸安裝之軸端內牙型

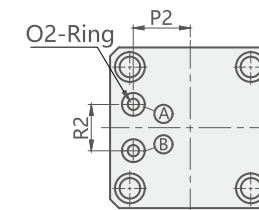


SW-W軸向雙軸安裝之軸端外牙型



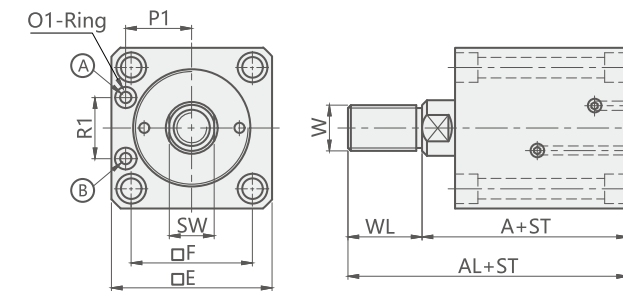
ST=Stroke

SDMB-N軸向后油路板之軸端內牙型

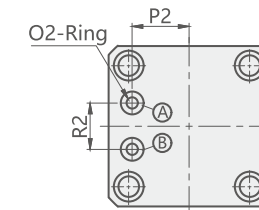


- Ⓐ 推出油孔 Push out
- Ⓑ 拉入油孔 Pull in

SDMA-W軸向前油路板之軸端外牙型



SDMB-W軸向后油路板之軸端外牙型



- Ⓐ 推出油孔 Push out
- Ⓑ 拉入油孔 Pull in

CHTB Hydraulic axial mounting type SDMA & SWMB Unit:mm

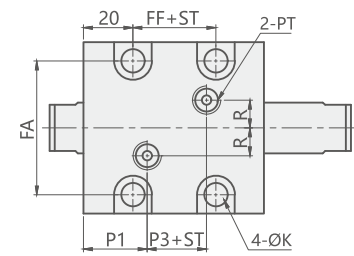
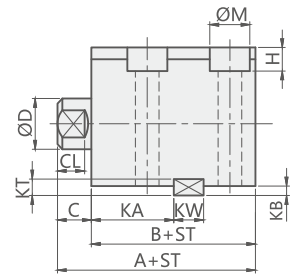
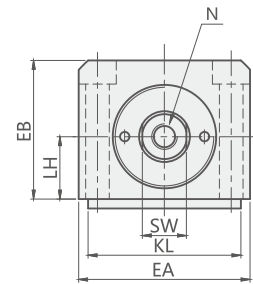
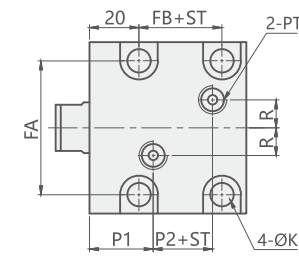
Bore	Φ20	Φ25	Φ32	Φ40	Φ50	Φ63	Φ80
A	51	53	64	65	71	80	95
AL	71	75	89	95	106	120	140
B	43	45	54	55	60	67	78
C	8	8	10	10	11	13	17
CL	6	6	7	7	8	10	14
D	12	14	20	25	30	35	45
SW	10	12	17	22	27	32	41
E	42	48	62	70	80	94	114
F	30	36	47	52	58	69	86
H	5.5	5.5	6.5	9	11	13	15
K	5.6	5.6	6.8	9	11	13	15
M	9	9	11	14	18	20	22
N	M8x1.25 x12D	M10x1.5 x15D	M12x1.75 x15D	M16x2.0 x20D	M20x2.5 x25D	M27x3.0 x35D	M30x3.5 x35D
W	M10x1.25	M12x1.25	M16x1.5	M22x1.5	M26x1.5	M30x1.5	M39x1.5
WL	20	22	25	30	35	40	45
SDMA P1	16.5	19.5	24	27	32	38	47
SDMA R1	13	18	24	26	27	35	45
SDMA O1	P3	P4	P6	P6	P6	P8	P11
SDMB P2	13	16	20	24	29	35	44
SDMB R2	11	13	20	20	20	26	30
SDMB O2	P5	P7	P9	P9	P9	P11	P11

CHTB Hydraulic axial mounting type SD & SW Unit:mm

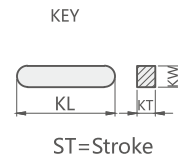
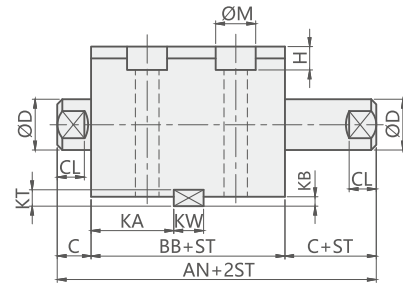
Unit:mm

Bore	Φ20	Φ25	Φ32	Φ40	Φ50	Φ63	Φ80	Φ100
A	51	53	64	65	71	80	95	105
AL	71	75	89	95	106	120	140	165
AN	-	-	89	90	97	108	127	140
AW	-	-	139	150	167	188	217	260
B	43	45	54	55	60	67	78	88
BB	-	-	69	70	75	82	93	106
C	8	8	10	10	11	13	17	17
CL	6	6	7	7	8	10	14	14
D	12	14	20	25	30	35	45	56
SW	10	12	17	22	27	32	41	50
E	42	48	62	70	80	94	114	134
F	30	36	47	52	58	69	86	102
H	5.5	5.5	6.5	9	11	13	15	17.5
K	5.6	5.6	6.8	9	11	13	15	18
M	9	9	11	14	18	20	22	26
N	M8x1.25x12D	M10x1.5x15D	M12x1.75x15D	M16x2.0x20D	M20x2.5x25D	M27x3.0x35D	M30x3.5x35D	M36x4.0x40D
W	M10x1.25	M12x1.25	M16x1.5	M22x1.5	M26x1.5	M30x1.5	M39x1.5	M48x1.5
WL	20	22	25	30	35	40	45	60
P1	22.5	23	28	28	29.5	31	33	39
P2	11	12	14	15	18	20	27	28
P3	-	-	13	14	16	20	27	28
R	5	5	10	10	10	10	15	15
PT	1/8	1/8	1/4	1/4	1/4	3/8	3/8	3/8

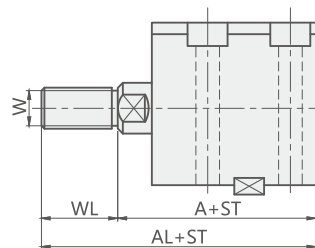
LA-N側向單軸安裝之軸端內牙型



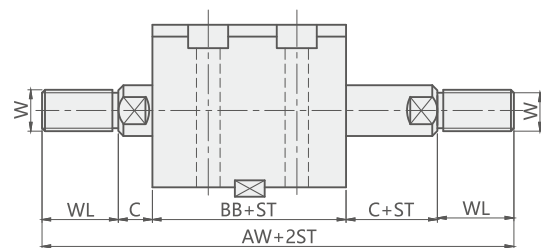
LW-N側向雙軸安裝之軸端內牙型



LA-W側向單軸安裝之軸端外牙型



LW-W側向雙軸安裝之軸端外牙型

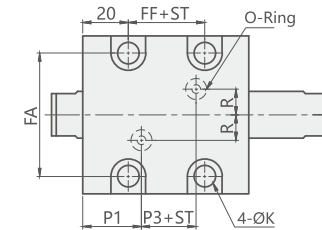
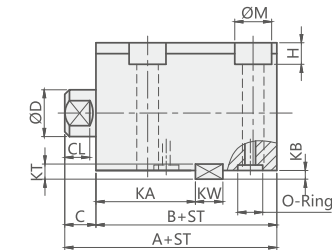
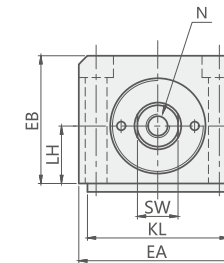
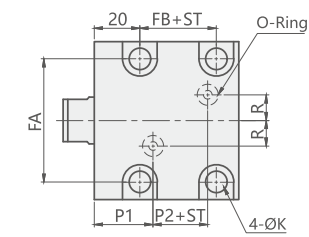


CHTB Hydraulic side mounting type LA & LW Unit:mm

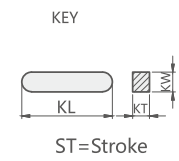
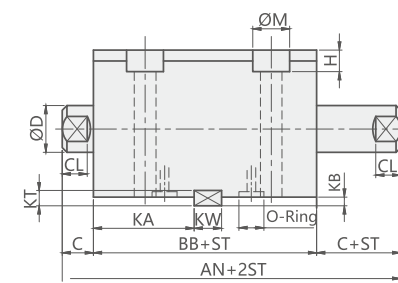
Bore	Φ32	Φ40	Φ50	Φ63
A	64	65	71	80
AL	89	95	106	120
AN	89	90	97	108
AW	139	150	167	188
B	54	55	60	67
BB	69	70	75	82
C	10	10	11	13
CL	7	7	8	10
D	20	25	30	35
SW	17	22	27	32
EA	70	80	94	114
EB	56	64	74	89
LH	25	29	34	42
FA	56	62	74	90
FB	24	23	27	32
FF	32	32	35	42
H	9	11	13	15
K	9	11	13	15
M	14	18	20	22
N	M12x1.75 x15D	M16x2.0 x20D	M20x2.5 x25D	M27x3.0 x35D
W	M16x1.5	M22x1.5	M26x1.5	M30x1.5
WL	25	30	35	40
P1	28	28	29.5	31
P2	14	15	18	20
P3	13	14	16	20
R	10	10	10	10
PT	1/4	1/4	1/4	3/8
KW	12	12	14	16
KT	8	8	9	10
KL	63	70	80	100
KA	28	28	29	31
KB	4.5	4.5	5	5.5

註：行程 < 20的無鍵槽及平鍵

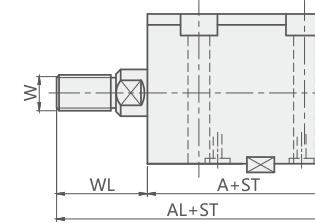
LAM-N側向油路板單軸安裝之軸端內牙型



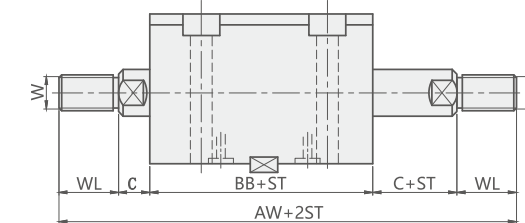
LWM-N側向油路板雙軸安裝之軸端內牙型



LAM-W側向油路板單軸安裝之軸端外牙型



LWM-W側向油路板雙軸安裝之軸端外牙型




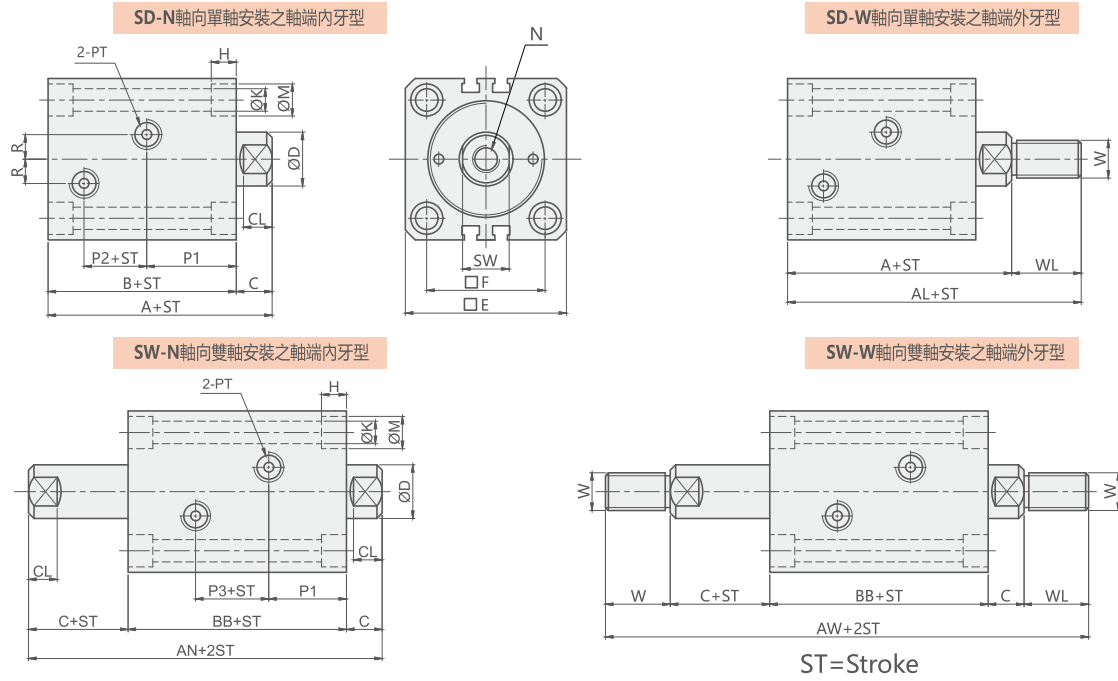
CHTB Hydraulic manifold type LAM & LWM Unit:mm

Bore	Φ32	Φ40	Φ50	Φ63
A	64	65	71	80
AL	89	95	106	120
AN	89	90	97	108
AW	139	150	167	188
B	54	55	60	67
BB	69	70	75	82
C	10	10	11	13
CL	7	7	8	10
D	20	25	30	35
SW	17	22	27	32
EA	70	80	94	114
EB	56	64	74	89
LH	25	29	34	42
FA	56	62	74	90
FB	24	23	27	32
FF	32	32	35	42
H	9	11	13	15
K	9	11	13	15
M	14	18	20	22
N	M12x1.75 x15D	M16x2.0 x20D	M20x2.5 x25D	M27x3.0 x35D
W	M16x1.5	M22x1.5	M26x1.5	M30x1.5
WL	25	30	35	40
P1	28	28	29.5	31
P2	14	15	18	20
P3	13	14	16	20
R	10	10	10	10
O	P9	P9	P11	P11
KW	12	12	14	16
KT	8	8	9	10
KL	63	70	80	100
KB	4.5	4.5	5	5.5
KA	38	38	40	42

訂購標示法 ORDERING INDICATION

示例: CHTM-SD32-20N-S1

	CHTM	系列 Series	CHTM	
	SD	安裝方式 Mounting type	SD: 軸向單軸安裝型 Single end rod type SW: 軸向雙軸安裝型 Double end rod type	
	32	油缸內徑 Hydraulic cylinder inside diameter	Φ32, Φ40, Φ50, Φ63, Φ80	
	20	標準行程 Standard stroke	10,20,30,40,50	
	N	軸端形式 Rod end type	N: 內牙 Female thread N W: 外牙 Male thread W	
	S1	近接開關 Sensor switch	一個S1, 2個S2 電壓DC 4-24V AC 4-120V 電流5-40mA	1pcs of S1, 2pcs of S2 Pressure DC 4-24V AC4-120V Electricity 5-40mA



CHTM Hydraulic axial mounting type SD & SW

Unit:mm

Bore	Φ32	Φ40	Φ50	Φ63	Φ80
A	83	80	86	97	112
AL	108	110	121	142	167
AN	104	101	109	120	140
AW	154	161	179	210	250
B	73	70	75	84	95
BB	84	81	87	94	106
C	10	10	11	13	17
CL	7	7	8	10	14
D	20	25	30	35	40
SW	17	21	27	32	37
E	62	70	80	94	114
F	47	52	58	69	86
H	6.5	9	11	13	15
K	6.8	9	11	13	15
M	11	14	18	20	22
N	M12x1.75x15D	M16x2.0x20D	M20x2.5x25D	M27x3.0x33D	M30x3.5x33D
W	M16x1.5	M20x1.5	M24x1.5	M30x1.5	M36x1.5
WL	25	30	35	45	55
P1	27	27	28	30	35
P2	29	27	31	36	38
P3	30	27	31	34	36
R	10	10	10	10	15
PT	1/4	1/4	1/4	1/4	3/8

註: 使用壓力≥10MPa時, 缸體需要採用不鏽鋼材質。

