

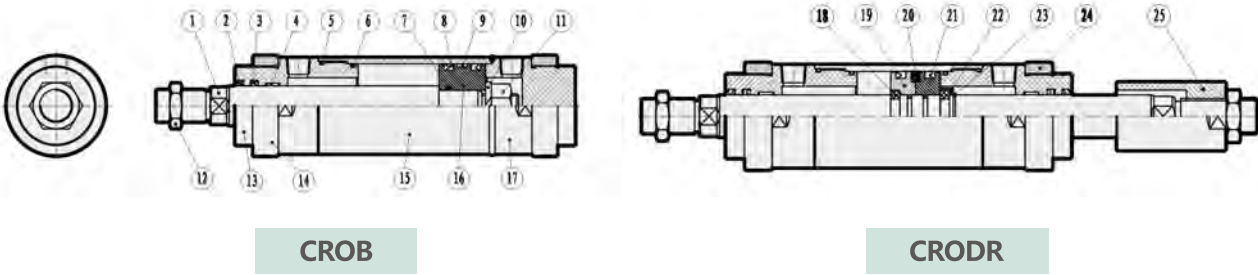
# CRO

## 系列圓型油壓缸

### CRO SERIES 14 MPA ROUND HYDRAULIC CYLINDER



#### 圓型油壓缸結構圖 INSIDE STRUCTURE



NO	零件名Part name	數量 Quantity	NO	零件名Part name	數量 Quantity	NO	零件名Part name	數量 Quantity
1	活塞桿 Piston rod	1	10	彈性墊圈 Spring washer	2	18	半卡環 Half snap ring	2
2	防塵油封 Dustproof seal	1	11	螺母 Nut	1	19	銅活塞 Copper piston	1
3	軸用油封 Oil seal for shaft	1	12	軸心螺母 Rod nut	1	20	磁環 Magnet Ring	1
4	導向帶 Guidance tape	1	13	前端蓋 Rod cover	1	21	O型圈 Gasket	1
5	O型環 Gasket	1	14	鎖緊螺母 Lock Nut	1	22	擋環 Baffle Ring	1
6	O型環 Gasket	1	15	缸筒 Cylinder tube	1	23	軸用擋圈 Washer On Shaft	1
7	O型環 Gasket	1	16	活塞 Piston	1	24	鎖緊螺母 Lock Nut	1
8	活塞油封 Piston seal	2	17	後端蓋 End cover	1	25	可調螺母 Adjustable Nut	1
9	耐磨環 Wearing ring	1						

#### 圓型油壓缸特性資料 Specification

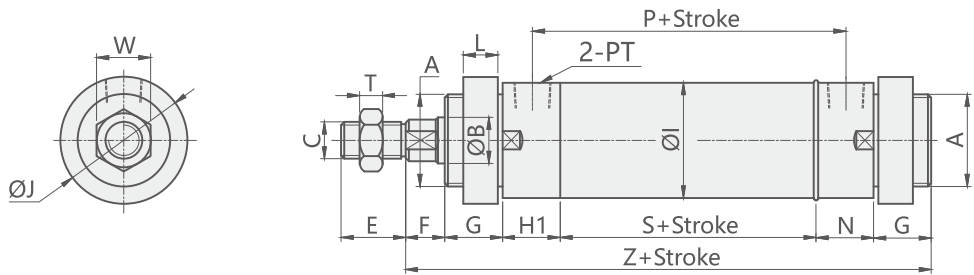
油缸內徑Hydraulic cylinder inside diameter(mm)	Φ40	Φ50	Φ63	Φ80	Φ100	Φ125
工作流體 Power Fluid	以濾清之標準液壓油 Filtered Oil					
缸管材質Material of cylinder bareel	碳鋼管Carbon steel STKM-13c/白鐵管 Stainless tubes SUS 304					
使用壓力範圍The range of pressure(mpa)	0.3-14 MPA(3-140kg/Cm <sup>2</sup> )					
使用速度範圍The range of speed (mm/sec)	8~300(mm/sec)					
使用溫度範圍Range of temperature(°C)	-10 ~ + 60 (°C)					
標準活塞長度Length of standard piston (PM)	30	35	35	50	60	70
訂製行程於1501-2500mm間活塞長度 (PM) Piston length when the stroke is between 1501-2500 mm	60	70	70	100	100	120
訂製行程於2501-4000mm間活塞長度 (PM) Piston length when the stroke is between 2501-4000 mm	90	100	100	150	180	200

#### 訂購標示法 ORDERING INDICATION

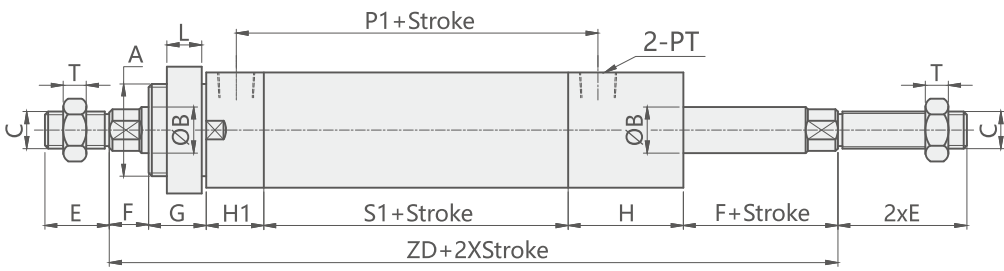
示例：CROB-R-D-63/35-100-LB-Y

CROB	型式 Type	CROA(平尾型) Flat tail type	CROB(B型) B type	CROC(CA型) CA type	CROD(雙軸型) Double rods				
R	磁性感應 Magnetic	無記號: 不附磁石 Blank: No magnet R: 內附磁石 (適用Φ40-Φ100) With magnet			本系列適用Φ40-Φ100 apply to bore Φ40-Φ100				
D	緩衝型式 Flxed Cushioning Type	無記號: 無 Blank: No cushion D: 雙側緩衝 cushions on both ends F: 前蓋側緩衝 cushion on head cover B:後蓋側緩衝 cushion on end cover							
63	油缸內徑 Hydraulic cylinder inside diameter	Φ40, Φ50, Φ63, Φ80, Φ100, Φ125							
35	軸心 Rod	標準Standard 最大Max	Φ20 Φ25	Φ25 Φ30	Φ35 Φ40	Φ40 Φ50	Φ50 Φ70	Φ60 Φ80	無記號: 標準軸心 Blank: standard rod
100	行程 Stroke	鋼管Steel barrel (Φ40-Φ200) 白鋼管Iron barrel (Φ40-Φ200)			最大行程: 4米 Max:4m 最大行程: 2.8米 Max:2.8m				
LB	缸體固定型式 Accessories for body	FA前法蘭型 Front flange type			LA 腳座型 Foot type				
		FB後法蘭型 Rear flange type			TC 耳軸型 Trunnion type				
Y	軸心固定型式 Accessories for rod	Y Y型接頭 Y joint			PHS 魚眼接頭 Rod-eye joint				
		YP Y+Pin Y with pin			T T型接頭 T joint				
		I I型接頭 I joint			H 焊套接頭Welding sleeve joint				
		KG 浮動接頭 Floating joint			A 可調螺帽Adjustable nut				

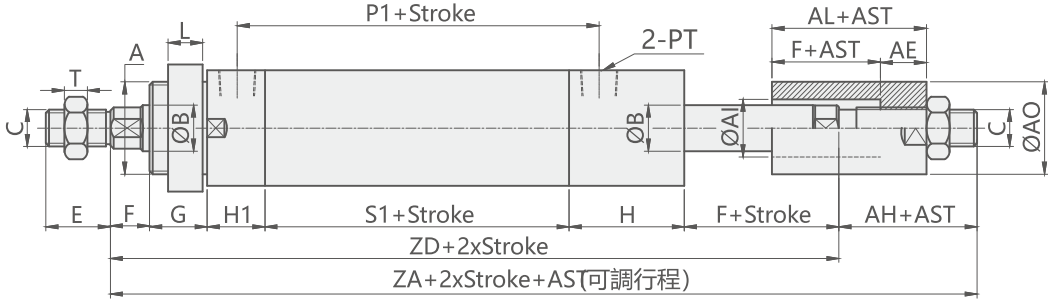
CR0B 標準型 CR0B STANDARD TYPE



CR0D 標準型 CR0D STANDARD TYPE



CR0D-A 双軸可調型 CR0D-A ADJUSTABLE DOUBLE-END R0D TYPE



Unit:mm

CHOB-CHOD TYPE																								A(可調行程)TYPE					
BORE	A	ΦB	C	E	F	G	H	H1	ΦI	L	N	ΦJ	P	PT	S	W	T	Z	P1	S1	ZA	ZD	AH	AE	ΦAI	ΦAO	AL		
Φ40	M40XP2.0	20	M16XP1.5	28	17	25	50	25	50	15	25	55	86	3/8"	61	23.5	8	178	107	82	246	216	30	20	25	40	37		
Φ50	M50XP2.0	25	M22XP1.5	40	20	25	50	25	60	15	30	65	96	3/8"	66	32	13	191	112	87	267	227	40	25	35	50	45		
Φ63	M60XP2.0	35	M30XP1.5	45	20	30	50	30	73	20	35	80	105	3/8"	70	41	13	215	125	95	295	255	40	25	45	60	45		
Φ80	M70XP2.0	40	M30XP1.5	45	20	30	60	30	95	20	40	90	127.5	1/2"	90	41	13	240	150	120	325	280	45	30	50	70	50		
Φ100	M90XP2.0	50	M40XP2.0	55	25	30	60	30	114	20	40	110	147.5	1/2"	110	55	15	265	180	150	365	320	45	30	60	90	55		
Φ125	M120XP2.0	60	M50XP2.0	70	30	30	70	40	145	20	50	150	172.5	3/4"	125	65	15	305	210	170	420	370	50	35	70	100	65		

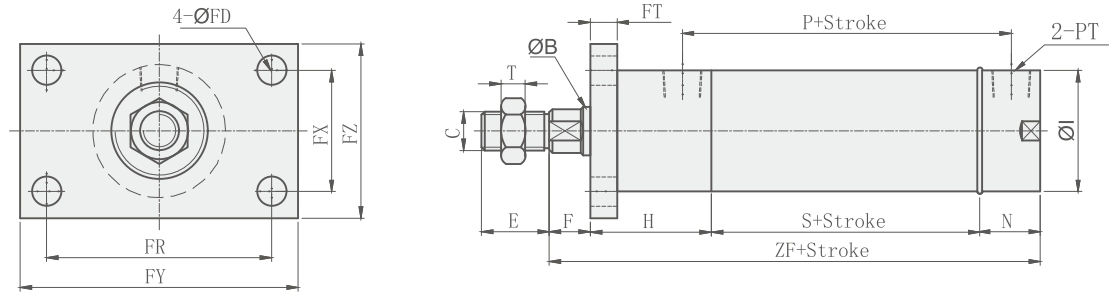
注意事項

- 1.軸心加大或縮小時如未註明長度尺寸時，依照本公司規定自行加工。
- 2.CRO40系列行程超過500mm以上時，軸心牙加大為M18xP1.5。
- 3.CRO系列行程未超過1499mm時，活塞長度（PM）依據表組裝，行程如超過1500mm以上時，活塞長度（PM）請參閱特性資料表。
- 4.前蓋螺帽（ΦJ）與軸心螺帽（W）規格大於M50時，其外徑為圓型，W，J指其外徑。
- 5.AST為客戶指定之可調行程。

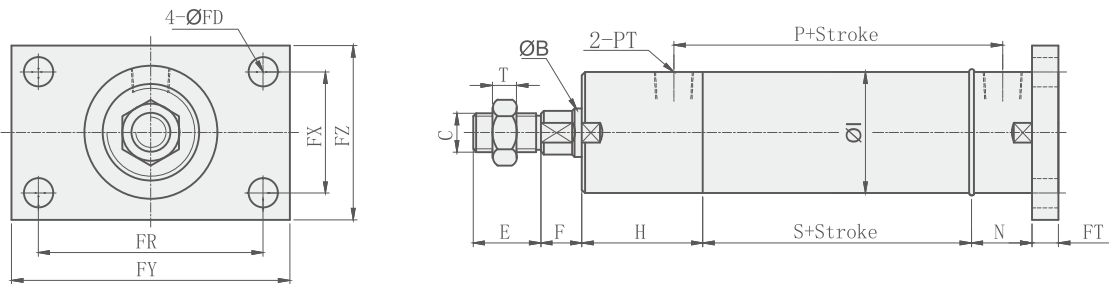
NOTE

1. For rods extending or reducing processing,if the length is not specified,then it should follow our company's stipulation for processing.
2. Rod thread tooth should be extending into M18\*P1.5 for CRO series bore size 40 whose stroke is more than 500mm.
3. For the CRO series whose stroke is not exceeding 1499mm,the length of piston conforms to specification table for assembling,For those whose stroke is more than 1500mm,the length of piston conforms to characteristics table.
4. The external diameter should be round when the size of rod cover nut (ΦJ) and rod nut (ΦW) is more than M50,W,J refer to its external diameter.
5. AST stands for adjustable stroke designated by customers.

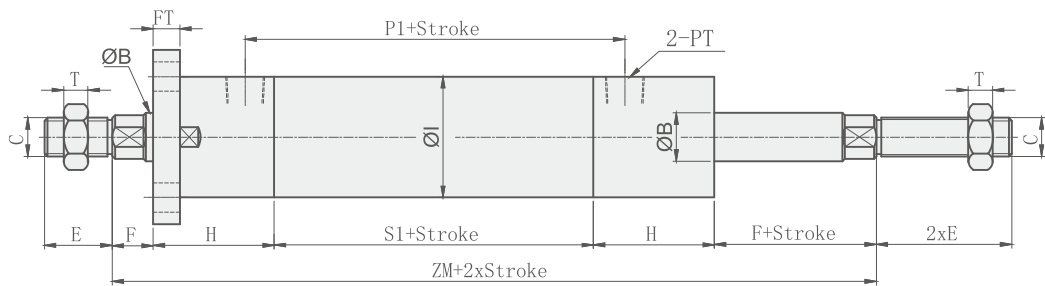
CR0A+FA 前法蘭型 CR0A+FA FRONT FLANGE TYPE



CR0B+FB 後法蘭型 CR0B+FB AFTER FLANGE TYPE



CR0D+FA 雙軸前法蘭型 CR0D+FA DOUBLE END FRONT FLANGE TYPE



Unit:mm

CROA-CROB-CROD TYPE																				FA-FB TYPE				
BORE	ΦB	C	E	F	H	P1	ΦI	N	P	PT	S	T	S1	ZF	ZM	ΦFD	FT	FR	FX	FY	FZ			
Φ40	20	M16XP1.5	28	17	50	107	50	25	86	3/8"	61	8	82	136	199	12	11	93	50	115	72			
Φ50	25	M22XP1.5	40	20	50	112	60	30	96	3/8"	66	13	87	146	207	14	17	110	56	150	85			
Φ63	35	M30XP1.5	45	20	60	125	73	35	105	3/8"	70	13	95	165	235	14	17	126	68	155	95			
Φ80	40	M30XP1.5	45	20	60	150	95	40	127.5	1/2"	90	13	120	190	260	18	20	152	75	190	120			
Φ100	50	M40XP2.0	55	25	60	180	114	40	147.5	1/2"	110	15	150	210	295	20	20	180	100	220	140			
Φ125	60	M50XP2.0	70	30	70	210	145	50	172.5	3/4"	125	15	170	245	340	24	30	222	122	280	170			

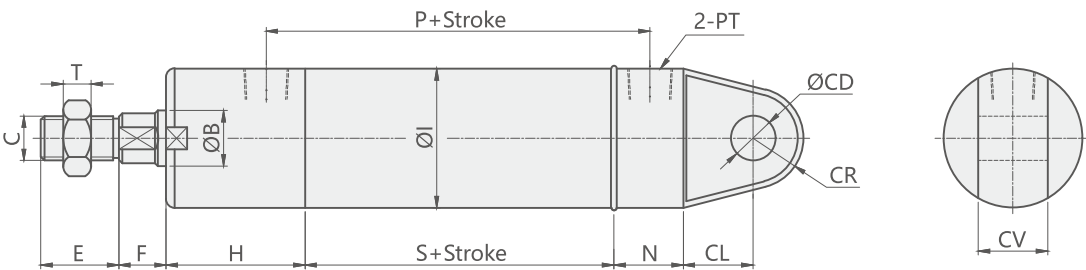
注意事項

- 1.軸心加大或縮小時如未註明長度尺寸時，依照本公司規定自行加工。
- 2.CRO40系列行程超過500mm以上時，軸心牙加大為M18xP1.5。
- 3.CRO系列行程未超過1499mm時，活塞長度（PM）依據表組裝，行程如超過1500mm以上時，活塞長度（PM）請參閱特性資料表。
- 4.前蓋螺帽（ΦJ）與軸心螺帽（W）規格大於M50時，其外徑為圓型，W，J指其外徑。
- 5.AST為客戶指定之可調行程。

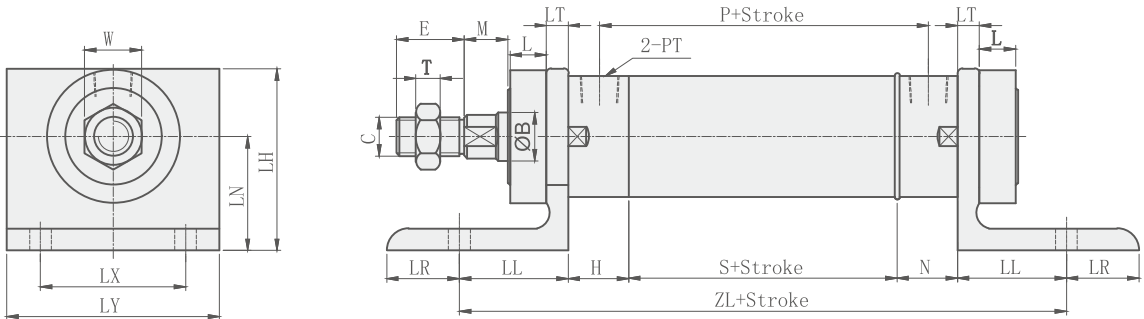
NOTE

1. For rods extending or reducing processing,if the length is not specified,then it should follow our company's stipulation for processing.
2. Rod thread tooth should be extending into M18\*P1.5 for CRO series bore size 40 whose stroke is more than 500mm.
3. For the CRO series whose stroke is not exceeding 1499mm,the length of piston conforms to specification table for assembling,For those whose stroke is more than 1500mm,the length of piston conforms to characteristics table.
4. The external diameter should be round when the size of rod cover nut (ΦJ) and rod nut (ΦW) is more than M50,W,J refer to its external diameter.
5. AST stands for adjustable stroke designated by customers.

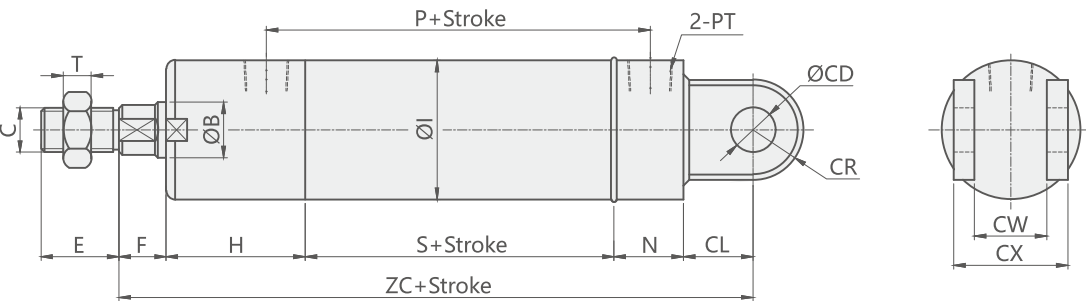
CR0+CA 單耳環型 CR0+CA SINGLE TRUNNICON TYPE



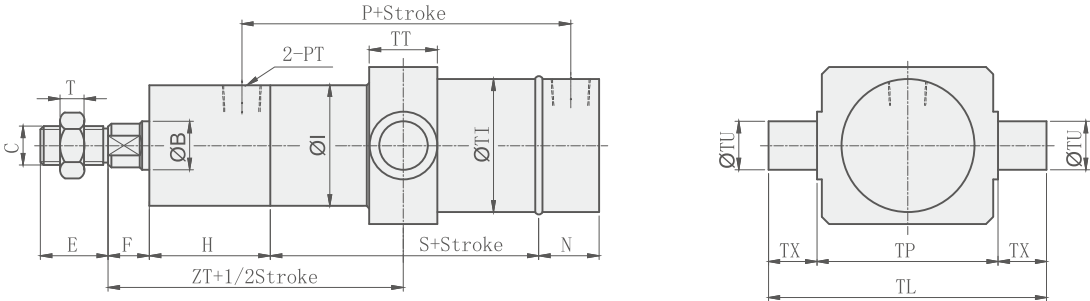
CR0B+LB 前後腳座型 CR0B+LB COURSE OF A TYPE



CR0+CB 雙耳環型 CR0+CB DOUBLE TRUNNION TYPE



CR0A+TC 中間耳軸型 CR0A+TC MINDDLE TRUNNION TYPE



Unit:mm

CRO TYPE														CA,CB TYPE					
BORE	ΦB	C	E	F	H	ΦI	N	P	PM	PT	S	T	ZC	CW	CL	ΦCD	CR	CV	CX
Φ40	20	M16XP1.5	28	17	50	50	25	88	30	3/8"	61	8	178	26	25	16	18	25	41
Φ50	25	M22XP1.5	40	20	50	60	30	96	35	3/8"	66	13	201	26	35	20	25	25	46
Φ63	35	M30XP1.5	45	20	60	73	35	105	35	3/8"	70	13	230	31	45	25	30	30	56
Φ80	40	M30XP1.5	45	20	60	95	40	127.5	50	1/2"	90	13	260	36	50	30	30	35	66
Φ100	50	M40XP2.0	55	25	60	114	40	147.5	60	1/2"	110	15	295	41	60	35	35	40	81
Φ125	60	M50XP2.0	70	30	70	145	50	172.5	70	3/4"	125	15	345	56	70	50	50	55	106

注意事項

- 1.軸心加大或縮小時如未註明長度尺寸時，依照本公司規定自行加工。
- 2.CRO40系列行程超過500mm以上時，軸心牙加大為M18xP1.5。
- 3.CRO系列行程未超過1499mm時，活塞長度（PM）依據表組裝，行程如超過1500mm以上時，活塞長度（PM）請參閱特性資料表。
- 4.前蓋螺帽（ΦJ）與軸心螺帽（W）規格大於M50時，其外徑為圓型，W，J指其外徑。
- 5.AST為客戶指定之可調行程。

NOTE

- 1. For rods extending or reducing processing,if the length is not specified,then it should follow our company's stipulation for processing.
- 2. Rod thread tooth should be extending into M18\*P1.5 for CRO series bore size 40 whose stroke is more than 500mm.
- 3. For the CRO series whose stroke is not exceeding 1499mm,the length of piston conforms to specification table for assembling,For those whose stroke is more than 1500mm,the length of piston conforms to characteristics table.
- 4. The external diameter should be round when the size of rod cover nut (ΦJ) and rod nut (ΦW) is more than M50,W,J refer to its external diameter.
- 5. AST stands for adjustable stroke designated by customers.

Unit:mm

CROA-CROB TYPE													LB TYPE								TC TYPE									
BORE	ΦB	C	E	M	H	N	L	P	PT	S	T	ZL	ΦLD	LH	LN	LL	LR	LT	LX	LY	ZT	F	H	ΦI	ΦTI	ΦTU	TL	TP	TT	TX
Φ40	20	M16XP1.5	28	18	25	25	15	86	3/8"	61	8	201	12	75	47	45	30	9	60	88	97.5	17	50	50	55	20	115	75	28	20
Φ50	25	M22XP1.5	40	18	25	30	15	96	3/8"	66	13	231	14	88	57	55	33	9	70	100	103	20	50	60	65	25	140	90	33	25
Φ63	35	M30XP1.5	45	17	30	35	20	105	3/8"	70	13	271	16	101	63	68	33	13	70	124	115	20	60	76	83	32	166	102	40	32
Φ80	40	M30XP1.5	45	17	30	40	20	127.5	1/2"	90	13	296	18	101	60	68	33	13	80	140	125	20	60	95	102	32	184	120	43	32
Φ100	50	M40XP2.0	55	20	30	40	20	147.5	1/2"	110	15	320	28	140	80	70	35	15	90	144	140	25	60	114	120	40	220	140	53	40
Φ125	60	M50XP2.0	70	25	40	50	20	172.5	3/4"	125	15	375	22	190	110	80	40	20	120	160	162.5	30	70	145	150	50	275	175	58	50

注意事項

- 1.軸心加大或縮小時如未註明長度尺寸時，依照本公司規定自行加工。
- 2.CRO40系列行程超過500mm以上時，軸心牙加大為M18xP1.5。
- 3.CRO系列行程未超過1499mm時，活塞長度（PM）依據表組裝，行程如超過1500mm以上時，活塞長度（PM）請參閱特性資料表。
- 4.前蓋螺帽（ΦJ）與軸心螺帽（W）規格大於M50時，其外徑為圓型，W，J指其外徑。
- 5.AST為客戶指定之可調行程。

NOTE

- 1. For rods extending or reducing processing,if the length is not specified,then it should follow our company's stipulation for processing.
- 2. Rod thread tooth should be extending into M18\*P1.5 for CRO series bore size 40 whose stroke is more than 500mm.
- 3. For the CRO series whose stroke is not exceeding 1499mm,the length of piston conforms to specification table for assembling,For those whose stroke is more than 1500mm,the length of piston conforms to characteristics table.
- 4. The external diameter should be round when the size of rod cover nut (ΦJ) and rod nut (ΦW) is more than M50,W,J refer to its external diameter.
- 5. AST stands for adjustable stroke designated by customers.